

CAUSAPORE Filtration elements with sintered metallic fibers

Manufactured in all stainless steel, CAUSAPORE filter elements incorporate depth media manufactured from sintered stainless steel fibers. These fibers create a porous media matrix optimized for particle retention down to 0.5 microns.

The depth media is sandwiched between stainless steel wire mesh and then pleated. The wire mesh provides extra mechanical strength and facilitates dispersed liquid flow to achieve excellent filtration Performance with minimal initial pressure drop.

CAUSAPORE seams and fittings are precision welded to perform in high pressure and high temperature applications. CAUSAPORE filter elements are designed to assure excellent cleaning and regeneration from back flushing, steam or chemical sanitization.



10 "Causapore with SF bayonet adapter configuration

Applications

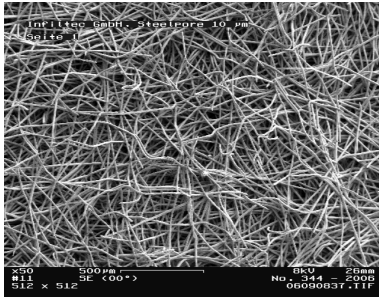
- **FOOD & BEVERAGE** Water, wine, beer
- **CHEMICALS** Solvents, polymeric Solutions
- **COSMETICS** Essential oils, perfumes, soaps
- **PAINTS** Liquid resins, aqueous paints
- **HYDRAULICS** Hydraulic and diathermic oils
- **AUTOMOTIVE** Electrophoretic solutions
- **WATER TREATMENT** Ultrafiltration and reverse osmosis

Product and Operating Specification

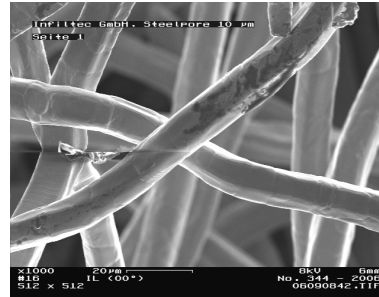
Filter media:	316 Stainless steel
Internal core:	316L Stainless steel
End caps:	316L Stainless steel
Max continuous temp.:	350°C
Steam sterilization:	Repeatedly sterilizable with cycles of 30 minutes at 135°C
Chemical sanitization:	Can be regularly sanitized by chemical agents
Max pressure drop:	15 bar at 25°C
Regenerability:	Steam, chemical agents or in backwashing

Features & Benefits

- Completely made from high quality stainless steel
- Filter level of 0.5 to 40 microns (micron)
- High mechanical stability
- High temperature resistance up to 350°C
- High pressure resistance to 15bar
- Regeneration by backwashing, steam or chemicals
- Repeatable sterilized
- "Biological grade" with certificate
- Many filter grade, length and adapter configurations

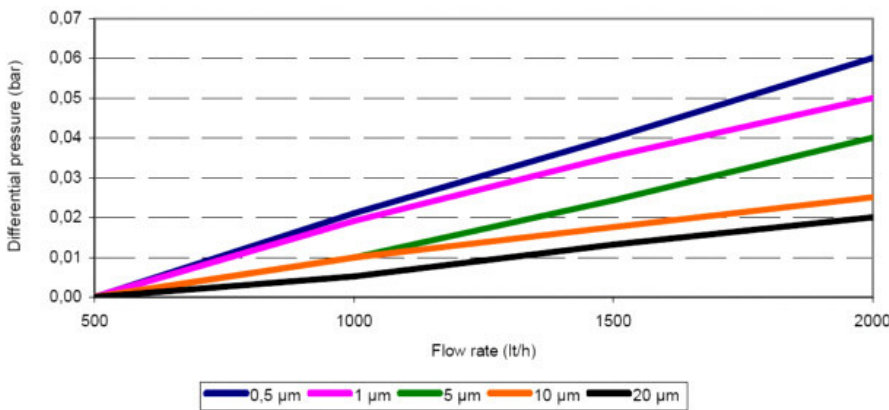


Sintered stainless steel fibers x 50



Sintered stainless steel fibers x 1000

Causapore - Pressure drop in water with 10" cartridge



Water flow/ 10" cartridge

Filtration degree (µm)	Max. recommended Flow (l/h)
0.5	2000
1	2000
5	3000
10	4000
20	4000
40	4000

Ordering Information Causapore

Example: CPO-025-20-DOB-GQ = Causapore, Rating 20 µm, 508 mm nominal length, double open end, Buna-N flat gaskets, standard

CPO-	XXX-	XX-	XX	X-	XX
Cartridge Code	Particle Rating in µm	Nominal Length in inch (mm)	Adapter- / End cap - configuration	Gasket- / O-Ring-Material	Quality execution
CPO = Causapore	S50 = 0,5 003 = 1,0 005 = 5,0 010 = 10 020 = 20 040 = 40	10 = 10" (254 mm) 20 = 20" (508 mm) 30 = 30" (762 mm) 40 = 40" (1016 mm)	GA = SOE 1" NPT GB = SOE 1.5" NPT GC = SOE 2" NPT DO = DOE SF = 226 O-Ring / fin SC = 226 O-Ring / flat TF = 222 O-Ring / fin TC = 222 O-Ring / flat GA = SOE 1" NPT GB = SOE 1.5" NPT GC = SOE 2" NPT	B = Buna N E = EPDM S = Silicon V = Viton T = PFA capsulated Viton	GQ = General grade CQ = Standard version with Quality Certificate BQ = Biological grade with Quality Certificate

Adapter / end cap configurations

